



VIDEO EDITION

Premium 2019



VISOFT



Editorial

Dear User,

Our company, ViSoft, has been given a new look, with a new logo, new colours and a new typeface. Now, we also present to you, our ViSoft Premium 2019 in the new design. The redesigned user interface can be adapted and individualised, according to the customer's wishes.

By introducing the quick consulting mode, we have achieved a new milestone in the digitalised sales process. The results of a consultation via the quick consulting mode can be further processed seamlessly, with the full version of ViSoft Premium.

There are also further improvements in terms of image calculation, the side browsers and the output plans.

The entire ViSoft team wishes you every success and lots of pleasure in your work with the new ViSoft Premium Update 2019!



A handwritten signature in black ink, which appears to read 'Rainer Nissler'.

Rainer Nissler,
Development Manager and Managing Director of ViSoft GmbH
Email: rainer.nissler@visoft.de

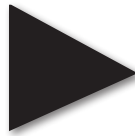
Content

The video version of News in Update is really easy:

In the table of contents, simply click on the chapter that interests you, and you will automatically be redirected to the chosen page.

If you want to see a more detailed explanation of the function, click on the arrow, and the ViSoft Premium video you have selected will begin.

Click on this arrow at the top of the page to start the corresponding video.



New functions: Direct. Fast. Easy.

New CI	4
New Look	5
New Interface	6
4K Resolution	7
Fast Consulting Mode	9
New Side Browser Functions	14
Sky	15
Project Media	16
Light Templates	17
Enhancement of the Output Plans	18
Electrical Ceiling Plan	19
Silicone Grouting	20
Plaster and Paint	21
Improved Photo Tuning	22
Queue	23
Colour Correction	24
New Features and Improvements	25
Chain Lights	26
Integrated Sketchup Browser	27
Tile Cutting	28
Improved Interlocking	29
Other New Features	30

New CI

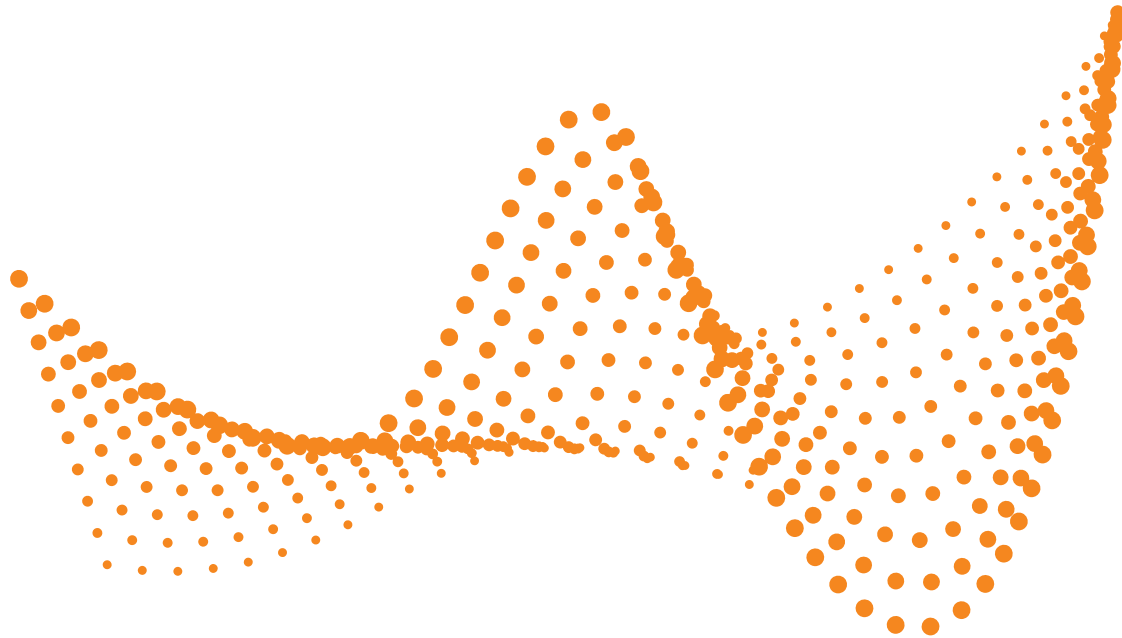
VIDEO



New Look

New look and feel

New colours, a new typeface and a new logo.



VISOFT

Simply
Inspire

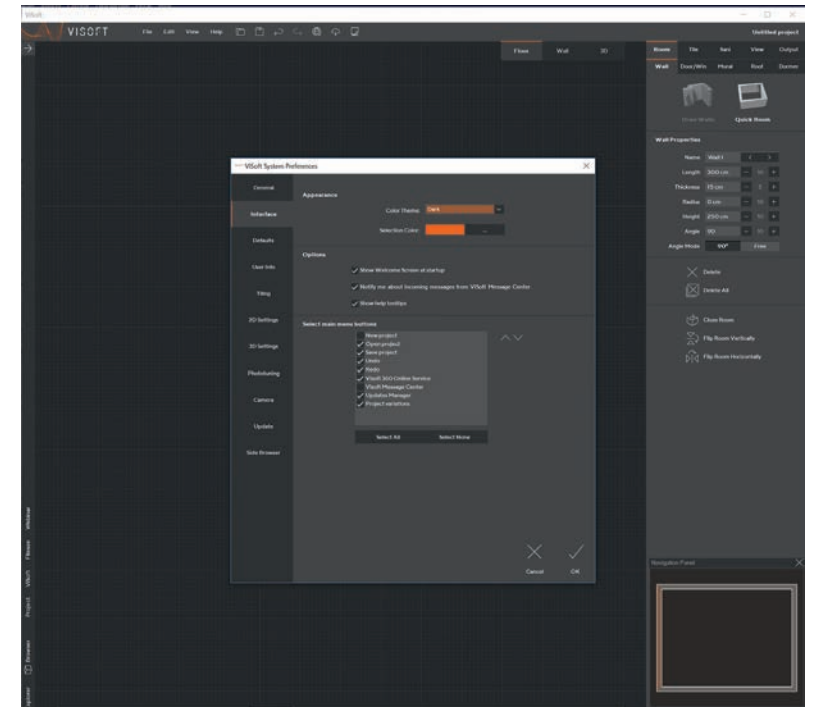
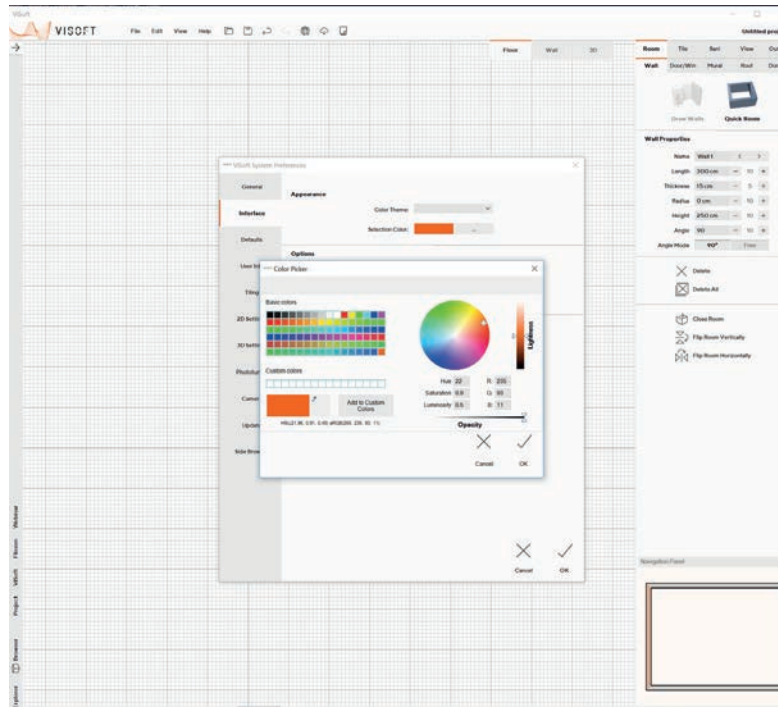
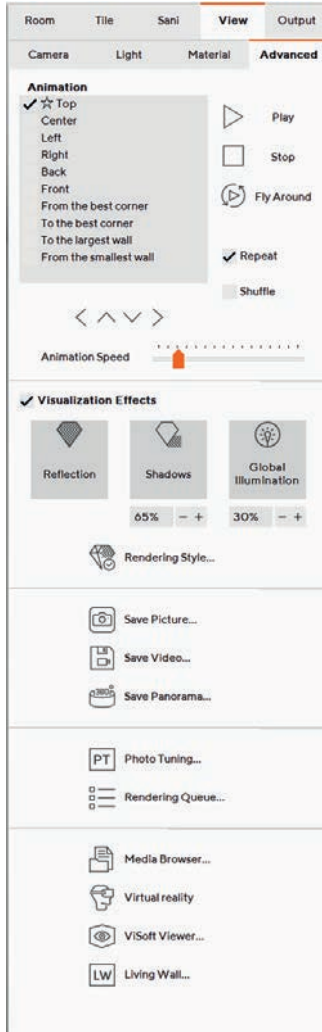
New Interface

Customised user interface

ViSoft Premium's new user interface conforms to the company's new CI.

ViSoft Premium now enables a user-defined range of accent colours that can be selected via the settings.

You also have the option of changing the colour scheme to "dark".



4K Resolution



4K Resolution

Life-like images

The new update supports a screen resolution of 3,980 x 2,160 – also known as 4K. It offers more than just expressive presentations on large showroom monitors. It also automatically calculates the menu for each individual resolution or class of device. Higher resolutions in the future, such as 8K, are also supported.

Full HD → 4K



Fast Consulting Mode

VIDEO

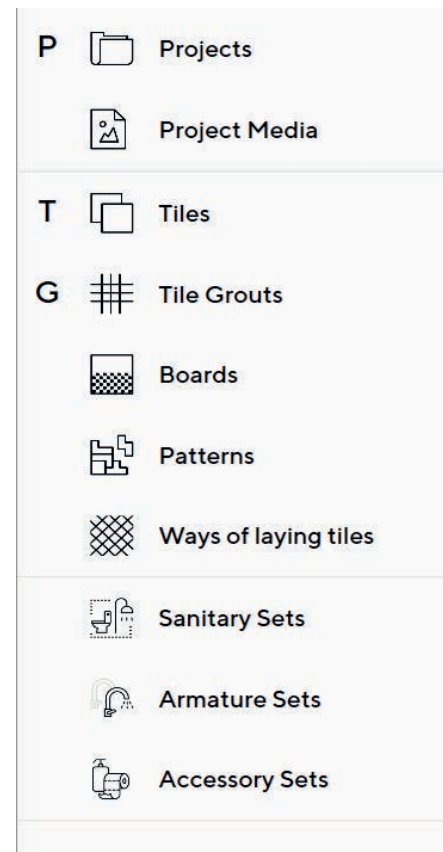


Fast Consulting Mode

ViSoft Premium in quick function

The ViSoft Premium consulting mode is a new function, designed for the initial sales consultation and selection, directly in the showroom. It only shows the planning interface and the page browser. Besides enabling the quick presentation of the variations and alternatives, the consulting mode uses the largest possible screen surface.

Under File – Settings – Side Browser, the filters that will be visible on the page browser are selected as soon as the Consulting Mode is activated.



The consulting mode is activated with the key combination "Ctrl + F11".

The side browser is shown in 3D, in full size.

You can end the consulting mode with ESC or Ctrl + F11.

Fast Consulting Mode

Tile filter

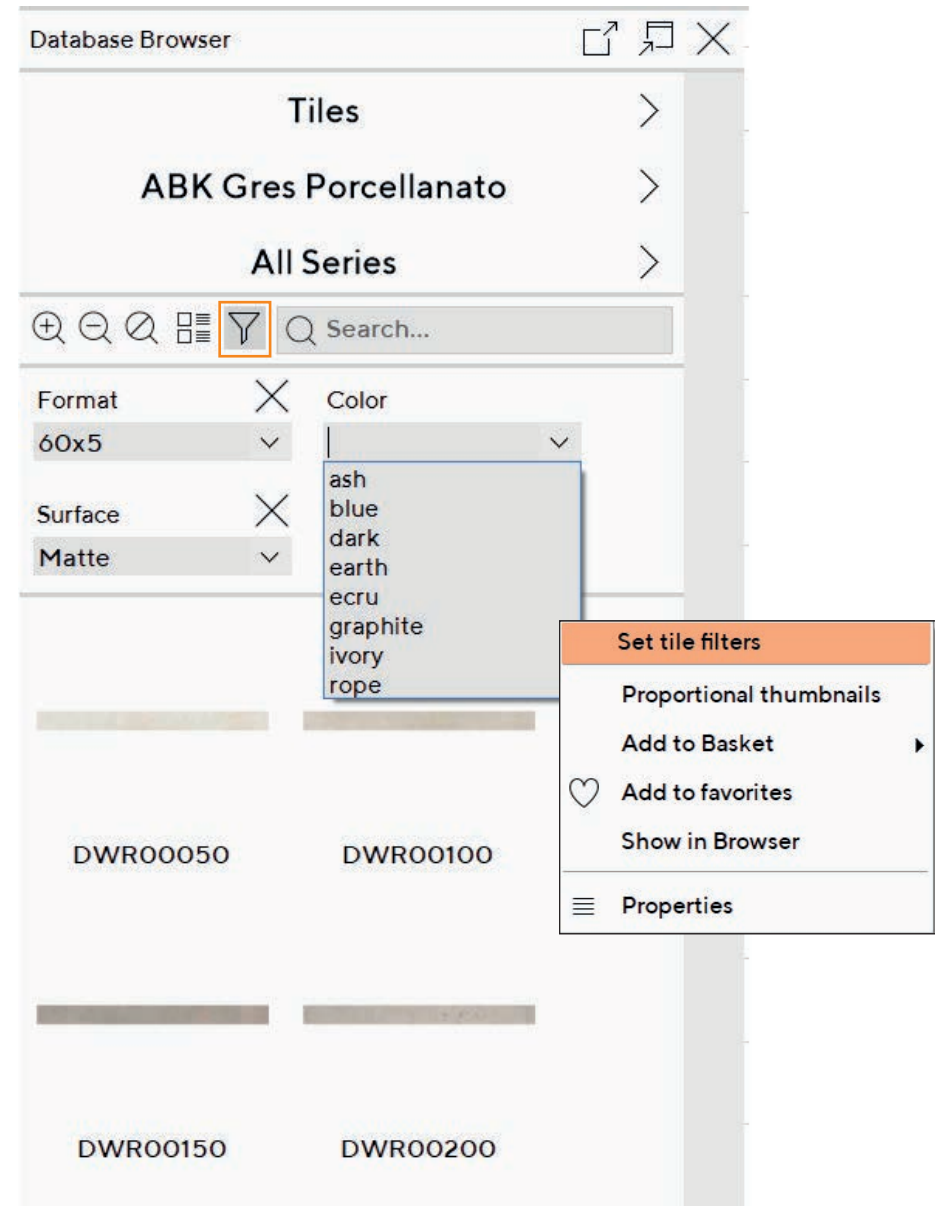
In the side browser, tiles can be filtered according to format, colour and surface. By applying this filter, tile variations can be shown quickly. You can apply the filter by right-clicking on the tile. In this way, different variations can be shown very quickly.

The same format – different colours and surfaces.

The same colour – different formats and surfaces.

The same surface – different formats and colours.

This simplifies and speeds up the decision-making process.



Fast Consulting Mode

Laying patterns

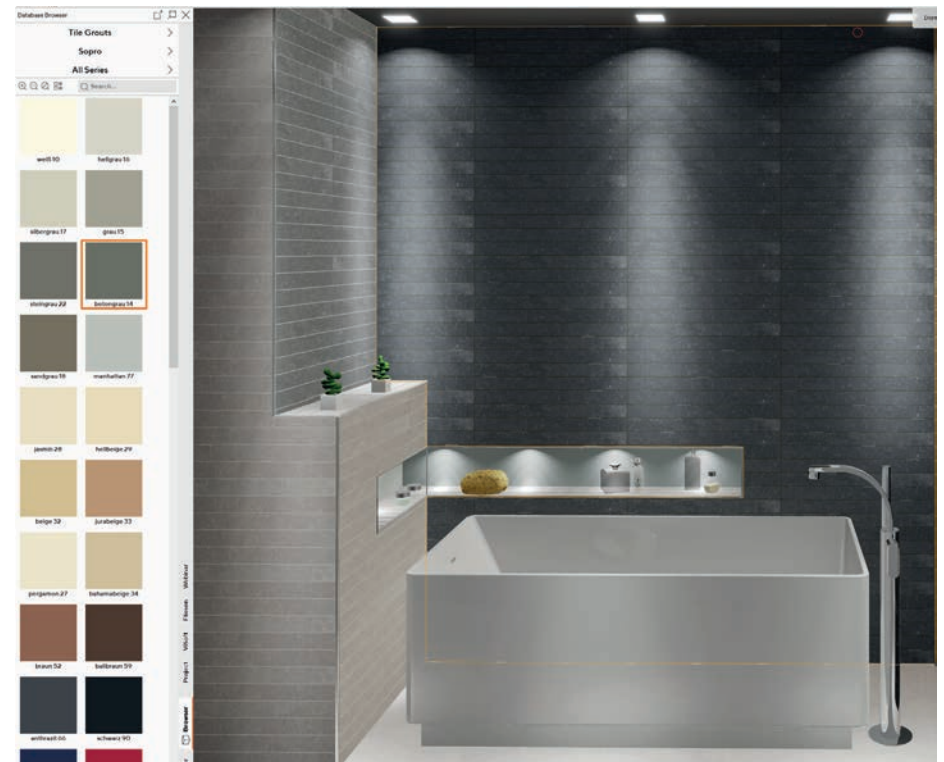
A new side browser function enables viewing and selecting of various tile-laying patterns. Select the pattern and click on the wall that is to be tiled according to that pattern.



Fast Consulting Mode

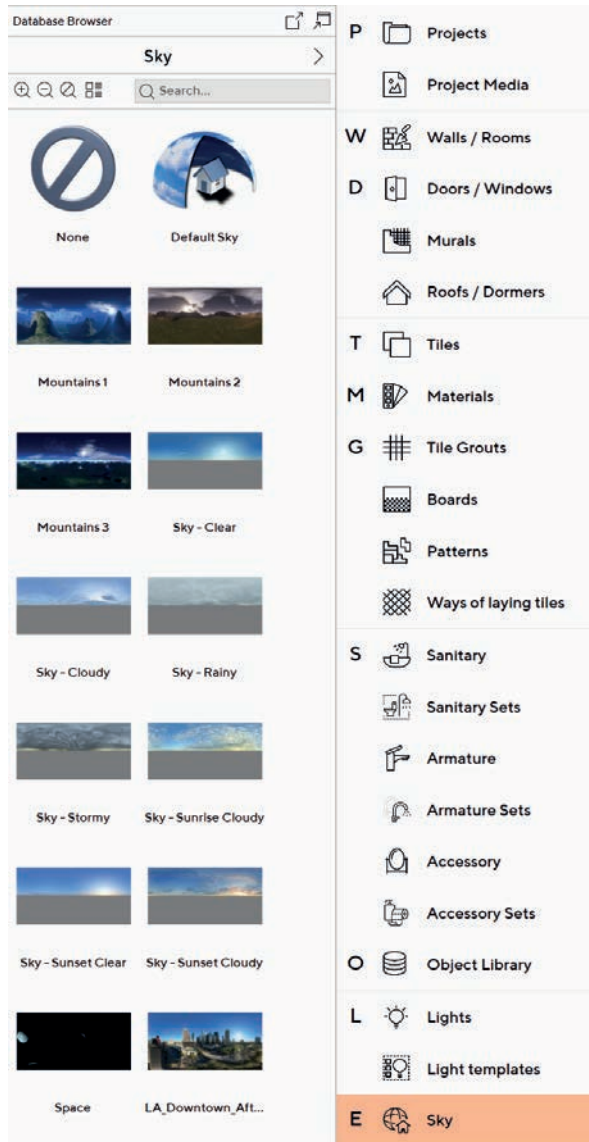
Grouting colors

The color of the grouting can be changed with a single click.



New Side Browser Functions





The outdoors

There is a new side browser function that contains pre-defined sky and outdoor images that can be positioned with the Drag&Drop function or by double clicking.

For partial views, the sky / outdoor image can be oriented via the “Align to View” function, according to the chosen camera angle.

For a spherical view, an all-round landscape (360 x 180 Grad) is generated. Here, no orientation is required.

The preferred outdoor scene can be saved as default, under File/Settings/3D.

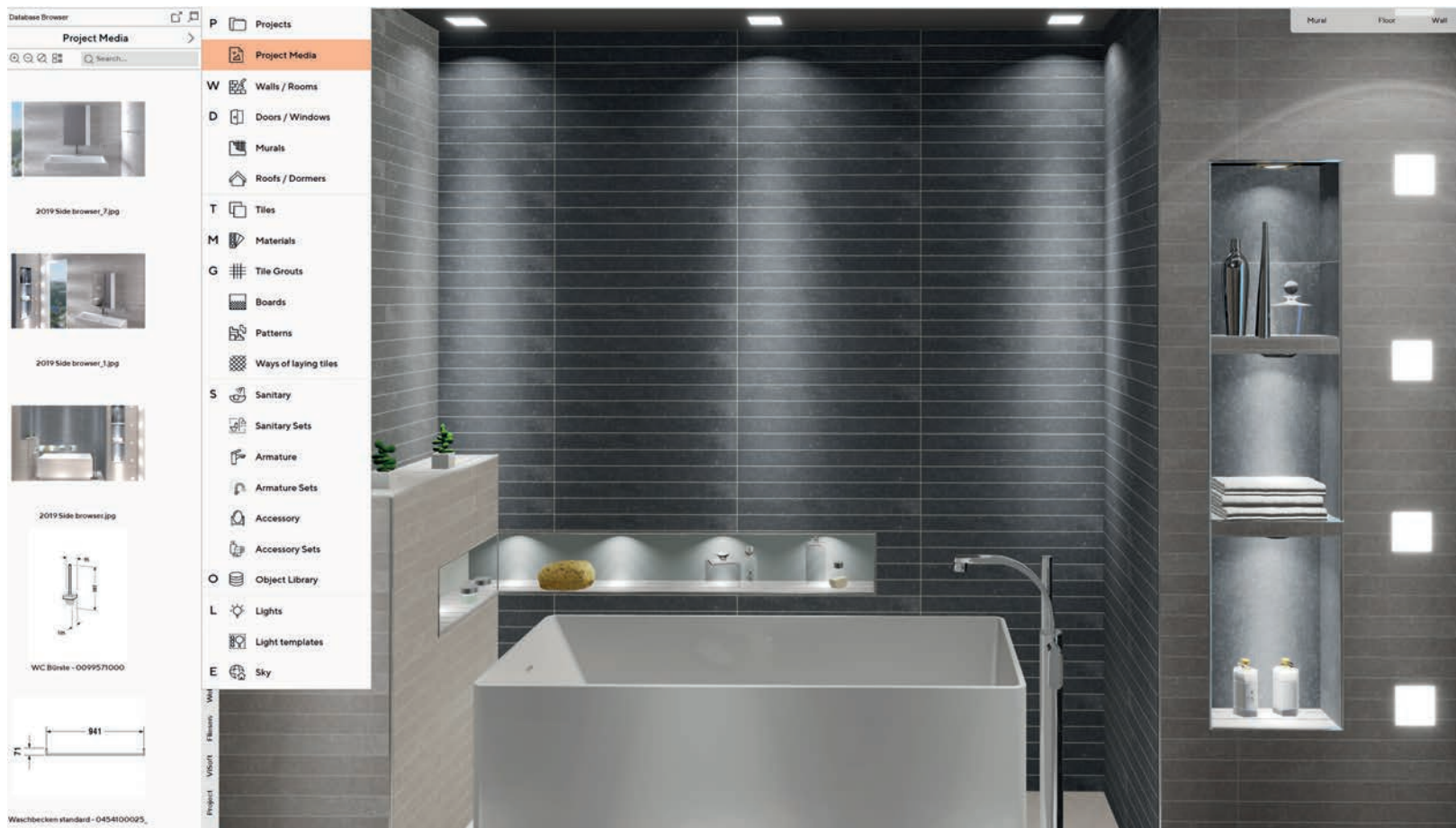
You can import your own images, as usual, via View – Light – Sun & Sky. They are then available in your side browser.



All images and panoramas at a glance

In the side browser, there is a new function – “Project Media” – where all the saved images and panoramas (Realtime-3D and Photo Tuning) for the project are shown as preview images. They can be selected by clicking on them, and they are shown in large format.

If the manufacturer of the sanitaryware included in the plan provides line drawings of the articles, they are also available in the project media.



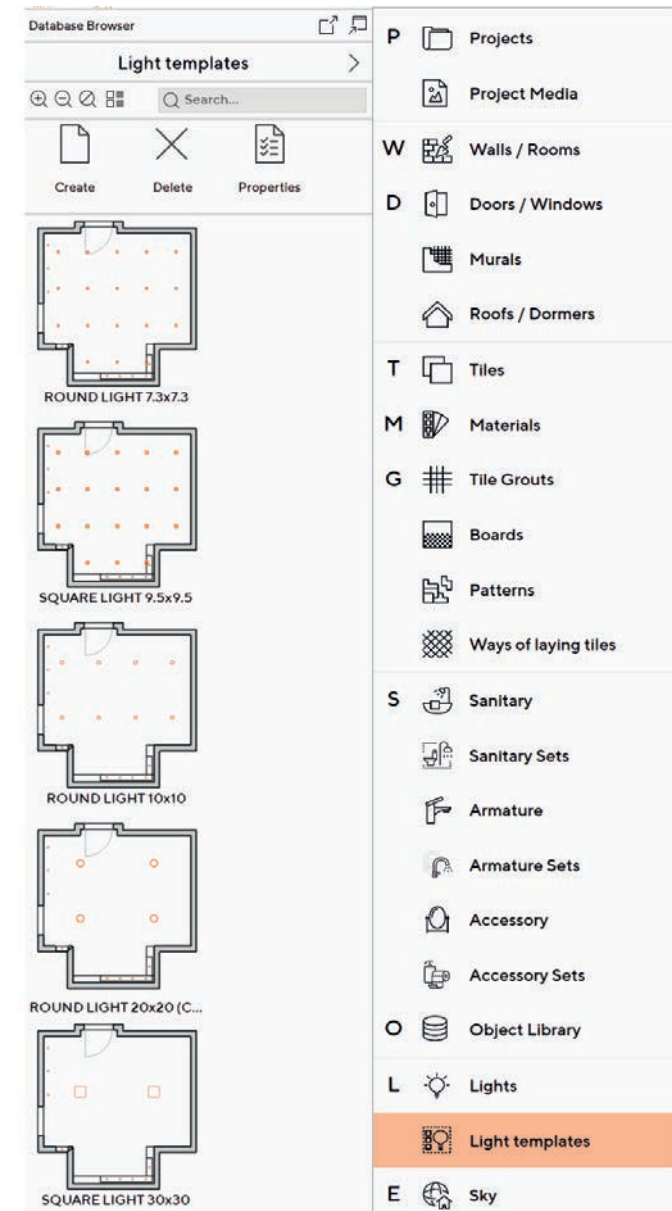
Light Templates

VIDEO



Optimal illumination of rooms

In the side browser, there is a new function “Light Templates” which automatically positions ceiling lights. This function automatically positions an appropriate number of lights in the right positions to suit the size of the room.



Enhancement of the Output Plans

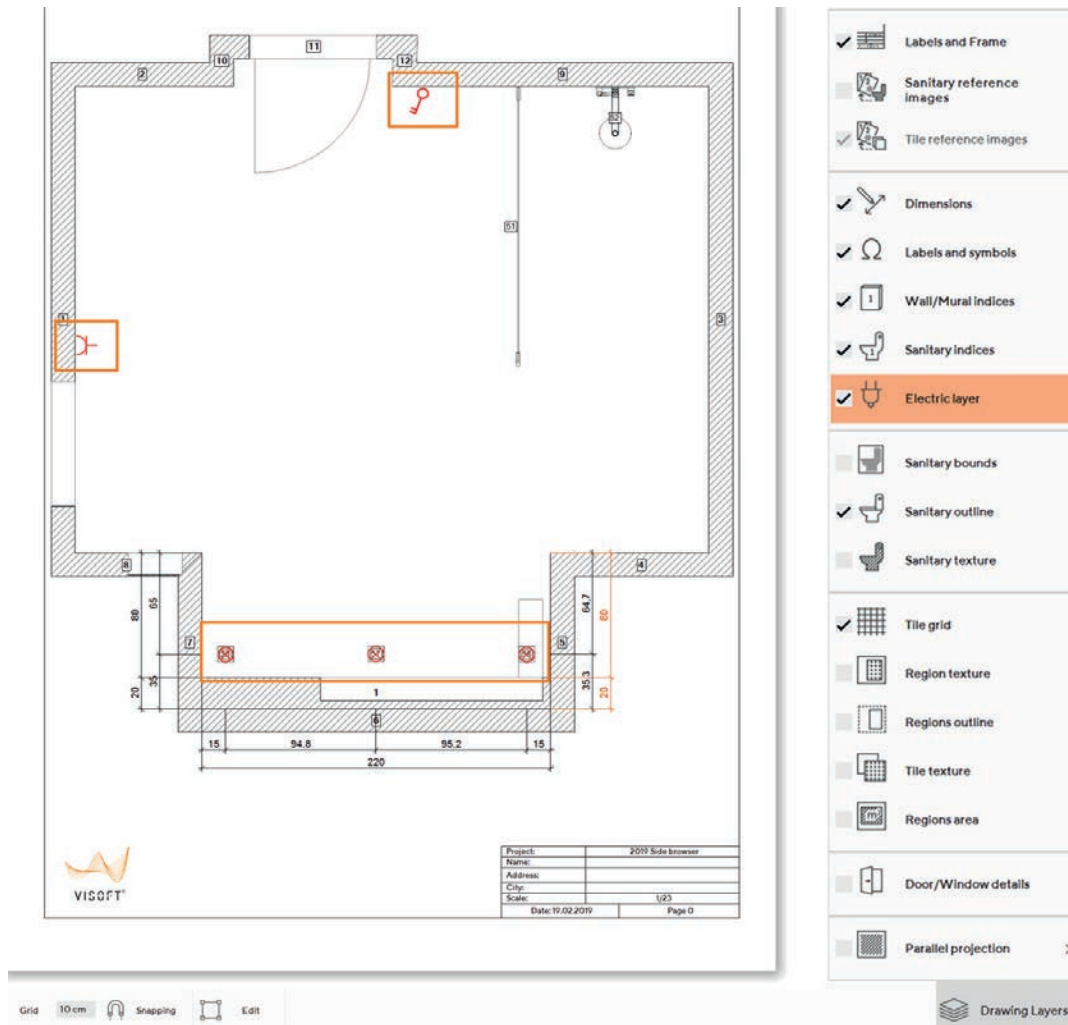


Electrical Ceiling Plan

VIDEO



Creation of electrical plans



You can position the ceiling lights in the 3D view and then switch to the output plan.

The symbols for the light source appear under Output - Plan - Ceiling.

Light switches and sockets are also shown as symbols in the electrical plan.

Silicone Grouting

Detailed list in the output plan

Under Output – Part List – Material, the brand, description and order number of the pre-selected silicone grouting and the required amount to be ordered are also listed.

Amount	Amount to Order	Price single	Unit	Price			
v01017 Add Predefined Entries							
Brand	Description	Order Number	Amount	Amount to Order	Price single	Unit	Add to Part List
Tile	Wage for floor tiling		0	0	0	sqm	<input type="checkbox"/>
Sanitary	Planning		0	0	0	pcs	<input type="checkbox"/>
Sanitary	Hourly wage for removal of old sanitary ware		0	0	0	hours	<input type="checkbox"/>
Sanitary	Disposal of waste		0	0	0	pcs	<input type="checkbox"/>
Sanitary	Installation of pipes in walls - material		0	0	0	hours	<input type="checkbox"/>
Sanitary	Installation of pipes in walls - hourly wage		0	0	0	pcs	<input type="checkbox"/>
Sanitary	Pre-/final assembly wash basin		0	0	0	pcs	<input type="checkbox"/>
Sanitary	Pre-/final assembly WC		0	0	0	pcs	<input type="checkbox"/>
Sanitary	Pre-/final assembly bidet		0	0	0	pcs	<input type="checkbox"/>
Sanitary	Pre-/final assembly bathtub		0	0	0	pcs	<input type="checkbox"/>
Sanitary	Pre-/final assembly shower tub		0	0	0	pcs	<input type="checkbox"/>
Sanitary	Pre-/final assembly accessories		0	0	0	pcs	<input type="checkbox"/>
Parquet	Parquet material		0	0	0	sqm	<input type="checkbox"/>
Parquet	Wage parquet laying		0	0	0	hours	<input type="checkbox"/>
Parquet	Material skirting		0	0	0	pcs	<input type="checkbox"/>
Parquet	Wage mounting skirting		0	0	0	hours	<input type="checkbox"/>
Stucco	Material stucco		0	0	0	sqm	<input type="checkbox"/>
Stucco	Wage stucco		0	0	0	hours	<input type="checkbox"/>
Ceiling	Material ceiling		0	0	0	sqm	<input type="checkbox"/>
Ceiling	Wage ceiling		0	0	0	hours	<input type="checkbox"/>
Electricity	Material electricity		0	0	0	pcs	<input type="checkbox"/>
Electricity	Wage electricity		0	0	0	hours	<input type="checkbox"/>
Pattex	Silicone on floor		15	15	0	lm	<input checked="" type="checkbox"/>
Pattex	Silicone on walls		14	14	0	lm	<input checked="" type="checkbox"/>

Room

Tile

Sani

View

Output

Plan

Part List

Picture Print

Tile

Sanitary

Material

+

Add
Predefined
Entries...

Options...

Filter
Columns...

Room: Base area

12,00 sqm

Room: Outline

14,00 m

Room: Volume

30,00 m3

Room: Height

2,50 m

Floor: Total area

11,80 sqm

Floor: Outline

14,40 m

Floor: Tiled area

11,80 sqm

Walls and Murals: Total area

35,68 sqm

Walls and Murals: Tiled area

35,68 sqm

Walls and Murals: Textured area

—

Ceiling: Total area

12,00 sqm

Roof area

—

Print All Part Lists

Print Current Part List

Print Settings...

File Browser

+

X

Add to List

Delete Entry

Import

Export

Reset to Default






✓

Apply

Plaster and Paint

Detailed list in the output plan

Under Output – Part List – Material, the brand, description and order number of the pre-selected wall and ceiling paint or plaster and the required amount to be ordered are also listed.

Material	Brand	Description	Order Number	Amount	Amount to Order
	Sopro	DF10® DesignFuge Flex (OPZ)	steingrau 22	5.58 kg	6
	Sopro	DF10® DesignFuge Flex (OPZ)	hellgrau 16	8.06 kg	8
			Default tile glue	210 kg	210
	Brillux	09.06.12 Wall material	09.06.12	10 sqm	10
		Ceiling material	Ceiling material	12 sqm	12
	Pattex	Silicone on floor	117	14 lm	14
	Pattex	Silicone on walls	118	10 lm	10

Improved Photo Tuning



Queue

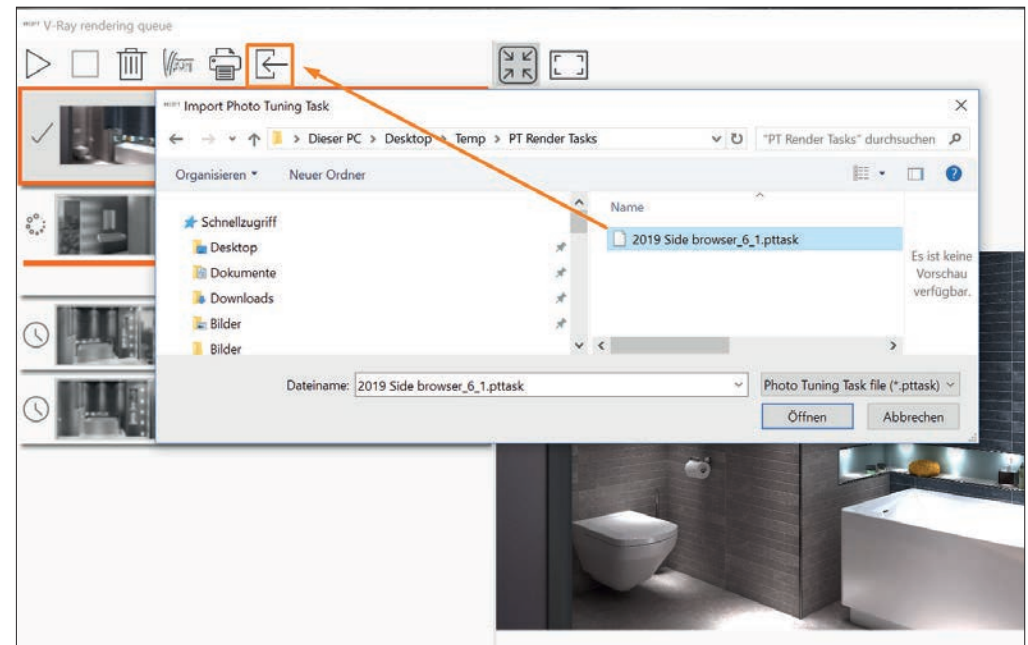
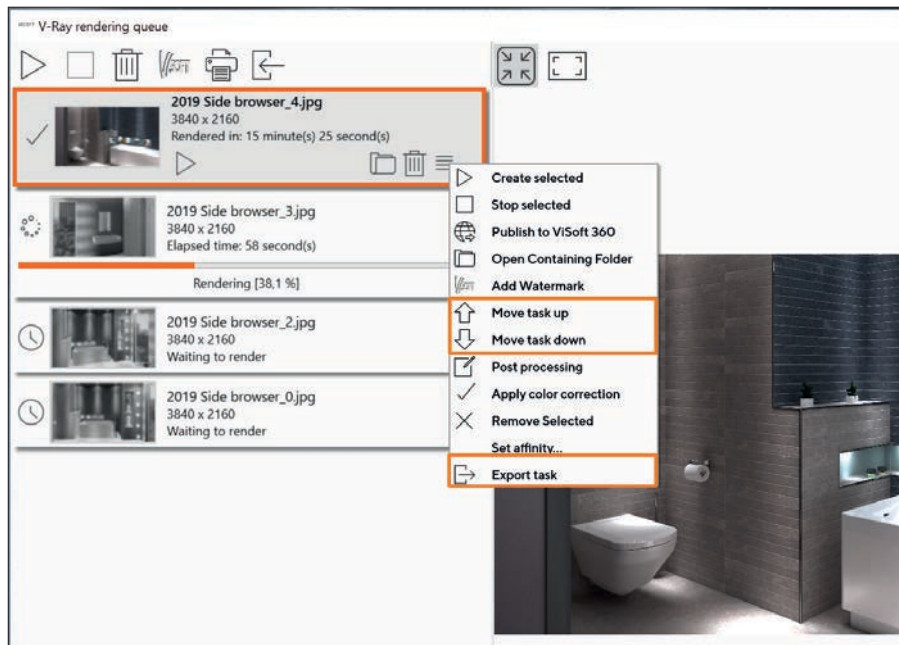
Improved rendering queue

Moving tasks into the rendering queue

Tasks can be moved up or down in the V-Ray processing queue at the click of a button. You can also drag the tasks to another position in the rendering queue.

Importing and exporting tasks

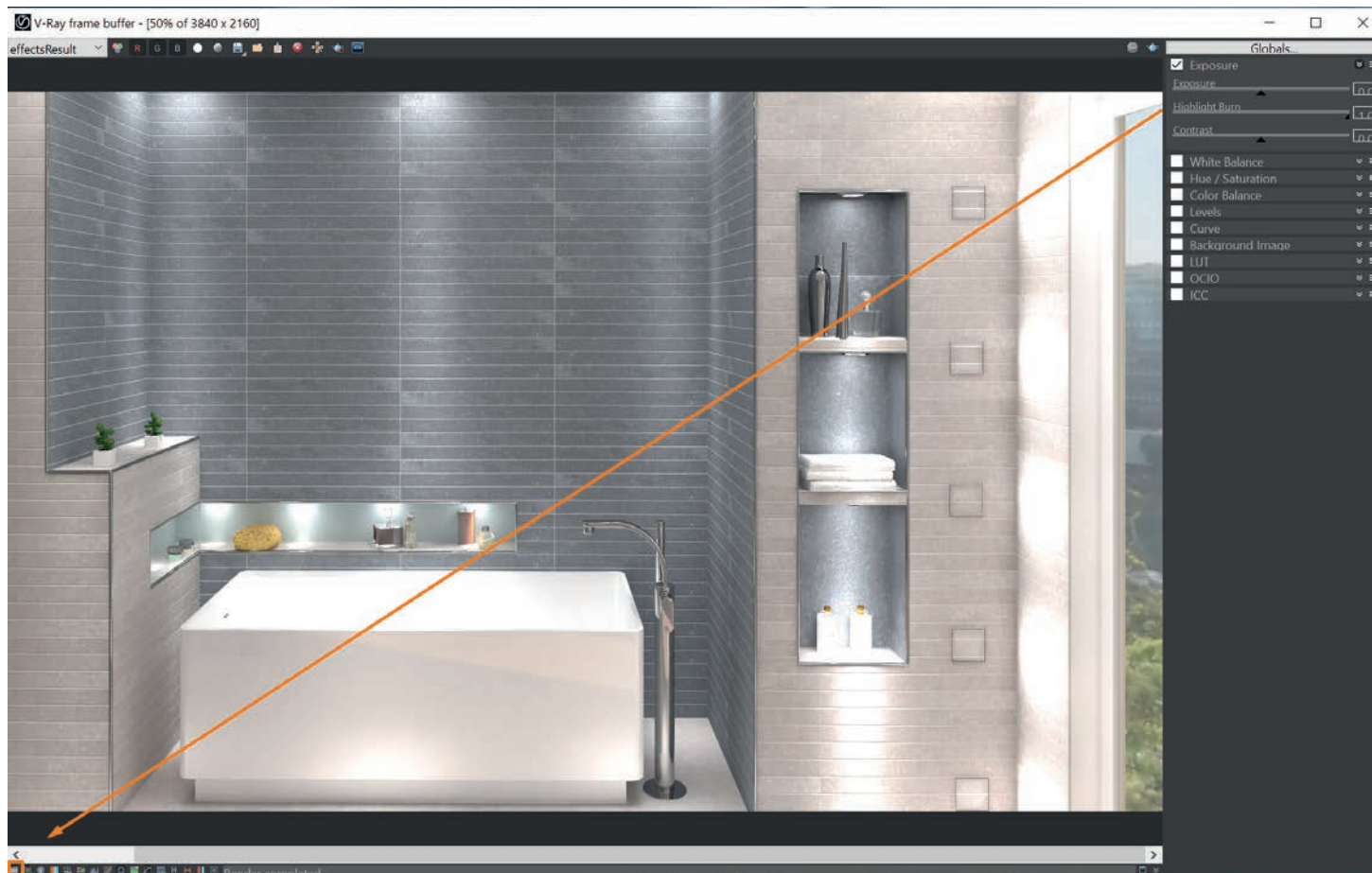
Tasks in the V-Ray rendering queue can be saved as *.pttask files in order to import them to another PC on which ViSoft Premium is installed.



Color Correction

Changing color settings

Color correction: The color settings for V-Ray rendering tasks that have already been completed can be changed. Select the required processes and right-click with the mouse to select "Show Corrections Control". Now select a pre-created color correction template and open it. The template will be applied to all of the pre-selected processes.



New Features and Improvements



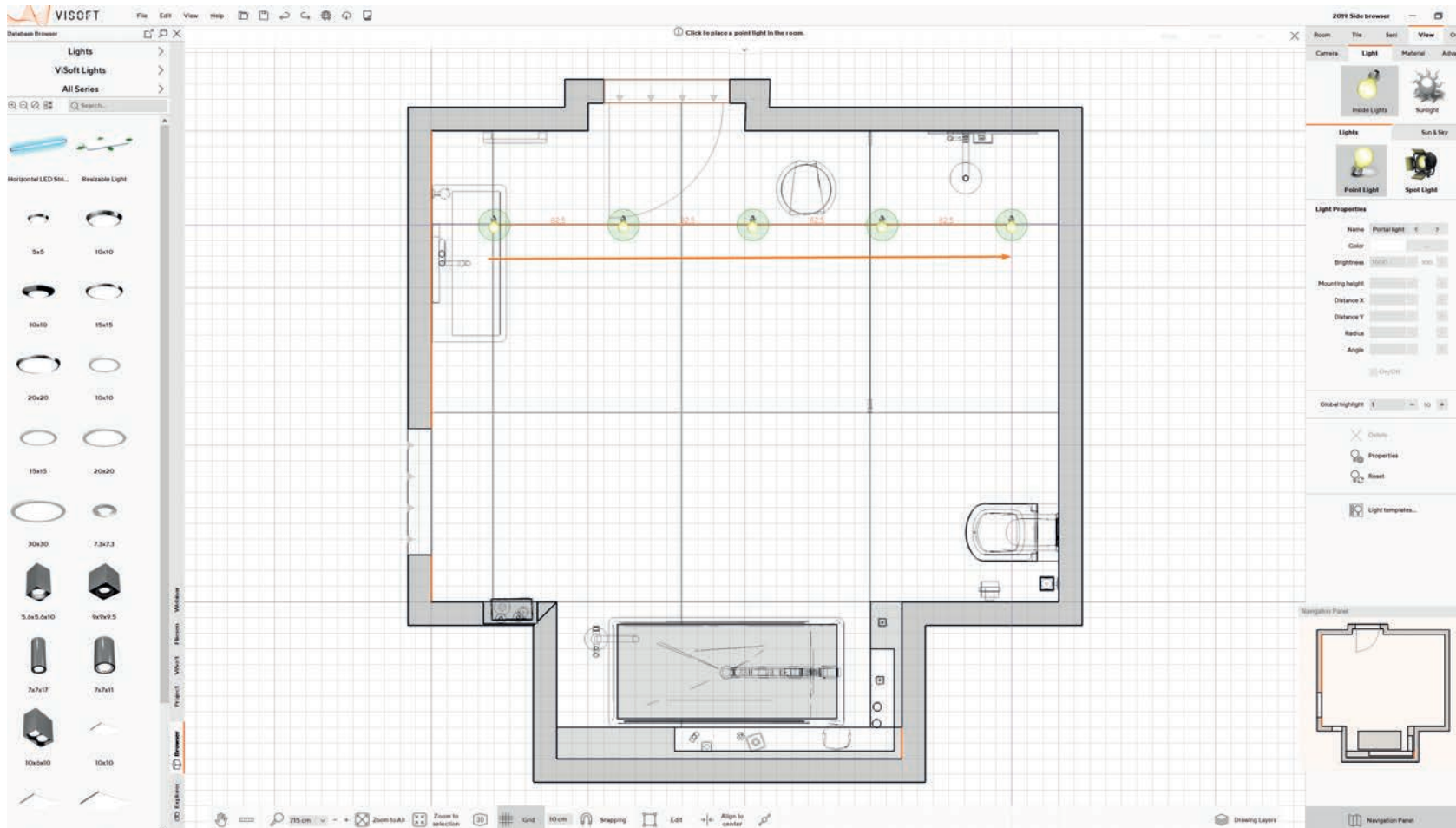
Chain Lights

VIDEO



Creation and processing of chain lights

With the new version, it is possible to position lights in a straight line. To do so, click on Light Source and draw a straight line by holding down the left button of the mouse. If the distance exceeds 150cm, another light will automatically be placed into the row. Afterwards you can delete individual lights and the distance between the remaining lights will be adjusted automatically.

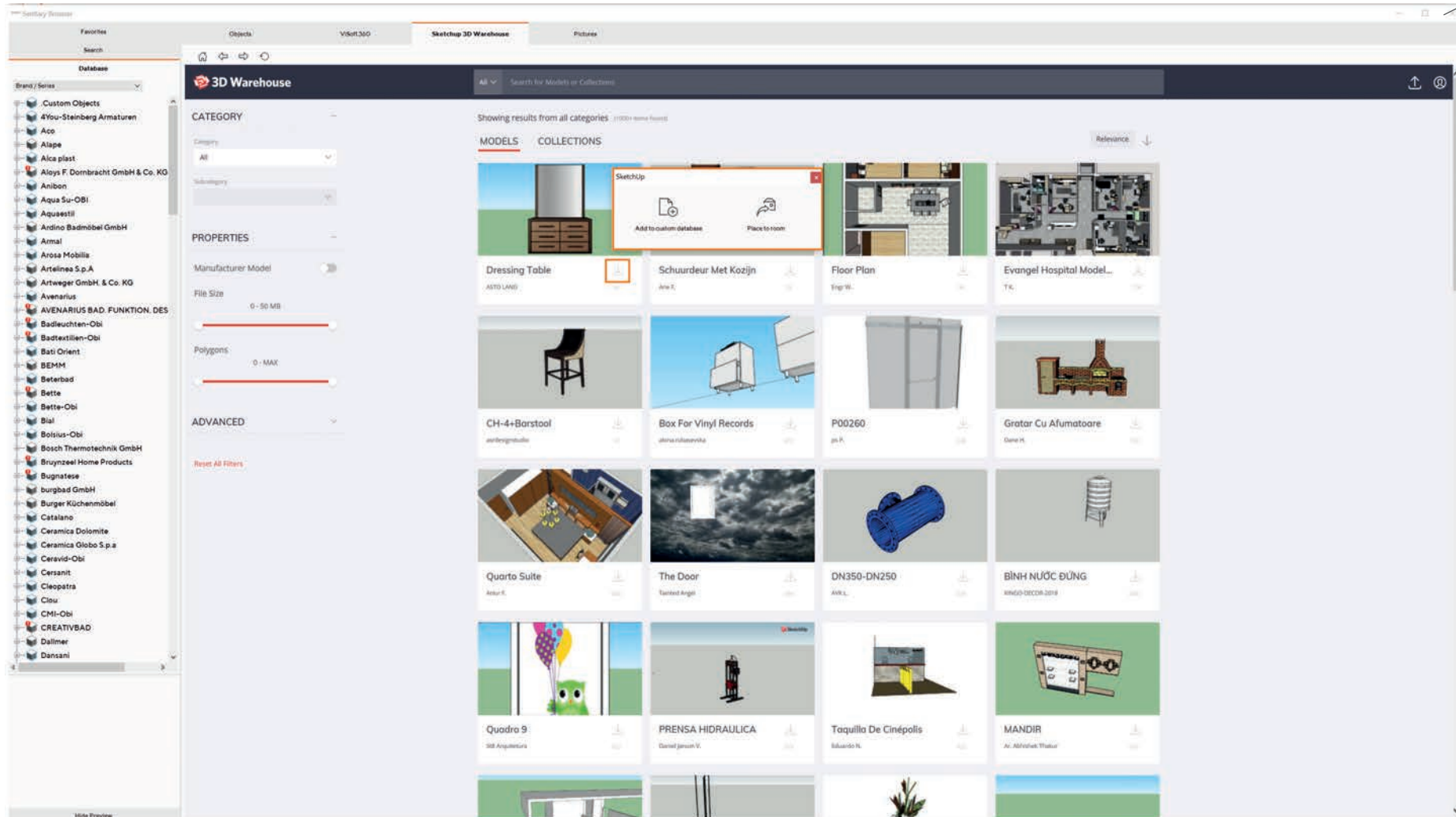


Integrated Sketchup Browser

VIDEO

Direct access to Sketchup

In the sanitary browser, you have direct access to Sketchup objects. Save them under “Custom Objects” or position them immediately.



Tile Cutting

Diagonally laid tiles in the part list

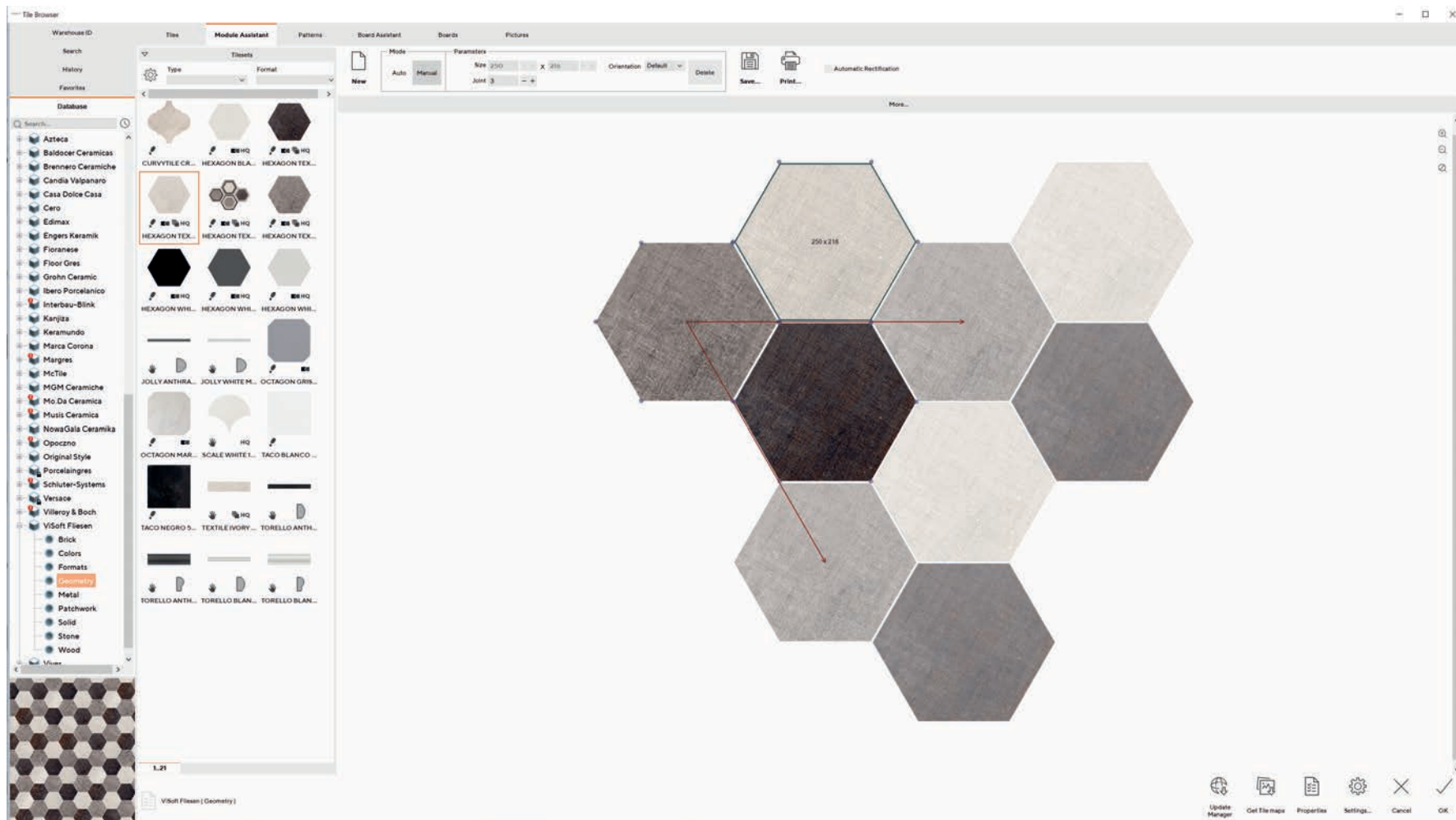
The offcut of diagonally laid tiles is indicated very accurately in the part list.



Improved Interlocking

Modules of non-rectangular tiles

This function enables you to create a module of any tiles that are imported into your “Custom Tiles” as PNG files. The background is hidden, and it does not overlap the neighbouring tile images. Your “Custom Tiles” can be mixed with tiles from the database.



Other New Features



Other New Features

More realistic standard lighting

Project search across all directories

Standard memory path for images

Export of EAN codes to GAEB

Orthogonal camera

Save projects in read-only format

Automatic read-only format of open network projects

Multiple uploads from the media browser

Standard correction of the mounting height of the washbasins

Standard sets for fast layout of sanitary, armature and accessory

Cross-manufacturer search, according to type of sanitary ware

Sorting of the sanitary database according to product type

Tiles can be calculated per box

Preview images rendered with V-Ray

Good Luck with ViSoft Premium 2019!

Support

Phone: +49 (0) 7031 49165 99

E-Mail: support@visoft.de

Information

Training videos

www.youtube.com/user/ViSoftGmbHTV

www.visoft360.com

Sharing platform for our customers with download options for the program, tiles, sanitary and information material.

www.visoft.de

Information and links.